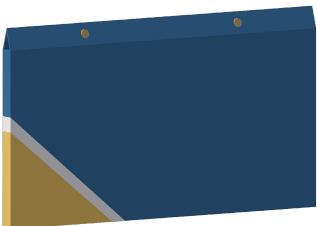




- Patented Reinforced Mineral Wool Core Benefits
- Superior low frequency and overall absorption " Class A fire protection (Flame Spread:10, Smoke Developed Rating:95)
- Durable cores that will last in gymnasiums or high-impact environments
- Tensile strength minimum of 2,631 lbs./sq.ft breaking load
- Compressive resistance of 547 psf at 25% compression
- Contribute to LEED ®credits
- Made using natural inorganic materials with at least 75% recycled content
- 6-8 lb. density
- Melting point of 2,150°F(ASTM E-136)
- Water repellent - will not mold, rot, or corrode

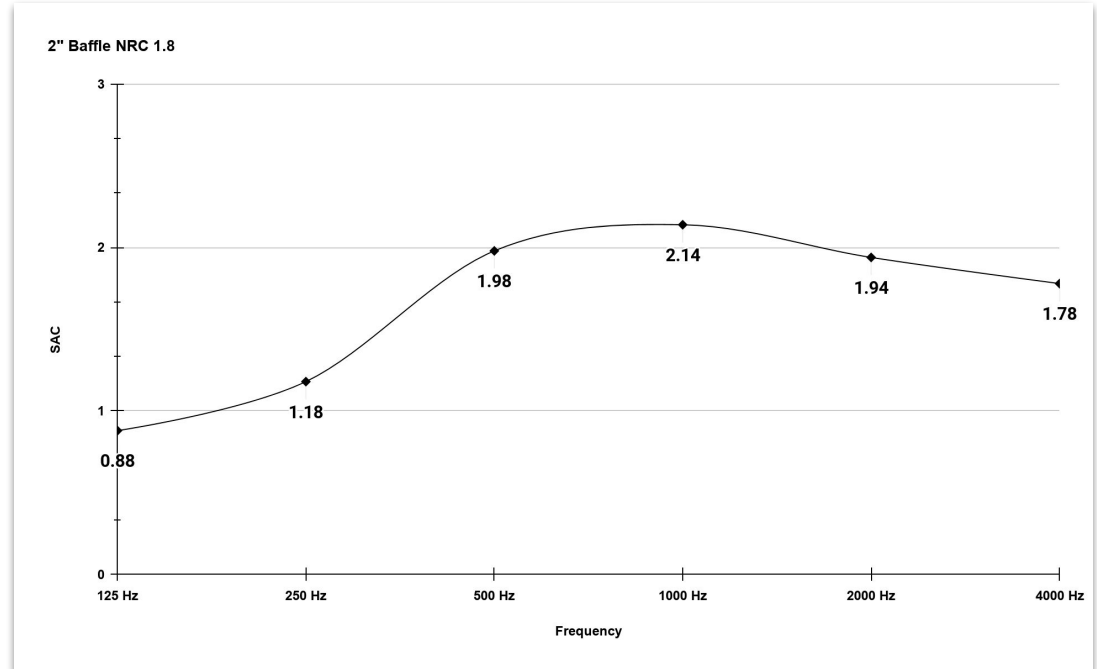


Vertically Hung
using Grommet
and Wire System



Baffles are a great addition to the ceiling area of gymnasiums and band rooms.

- Unmatched Class A fire protection as a complete panel assembly
- Provide sound absorption in the upper ceiling area
- Fit perfectly between high ceiling beams or joists
- Eliminate echo in the upper part of the room
- Help bring down the reverberation time in the space



125 Hz	250 Hz	500 Hz	1000 Hz	2000 Hz	4000 Hz	NRC
.88	1.18	1.98	2.14	1.94	1.78	1.80

Dimensions	2'x2' to 4'x8'; Custom sizes available
Panel Depth	1" to 4"
Fabric	Selected from our manufacturer's standard fabric
Core Material	Rockwool
Backing	Fiberglass Mat
Edge Treatment	Regular edge
LEED Eligible	Yes